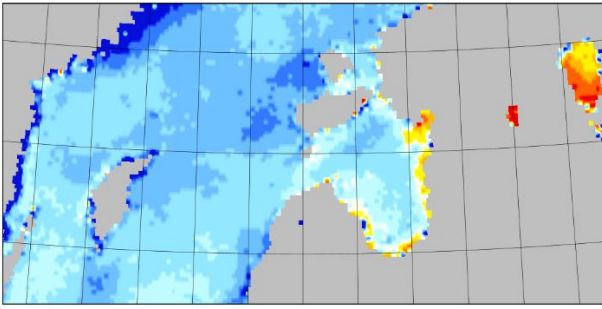


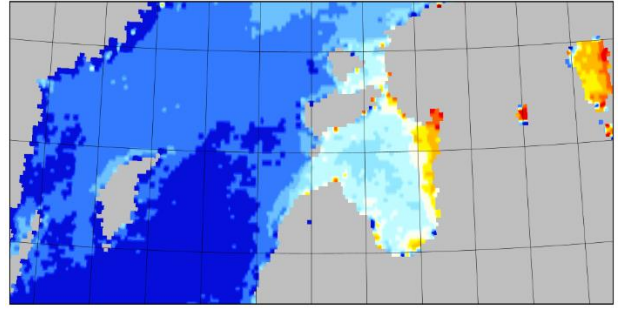
Extended Fore-Ule index of the remote-sensing reflectance (0 to 21), according to Woerd and Wernand (2015) and Pit...



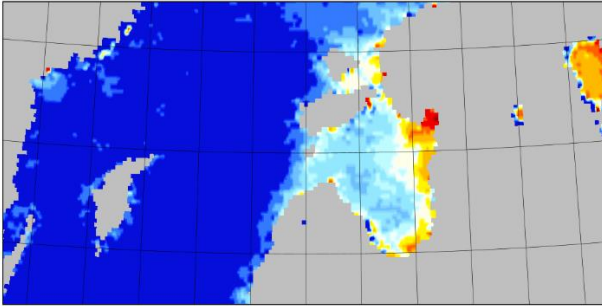
May 2008



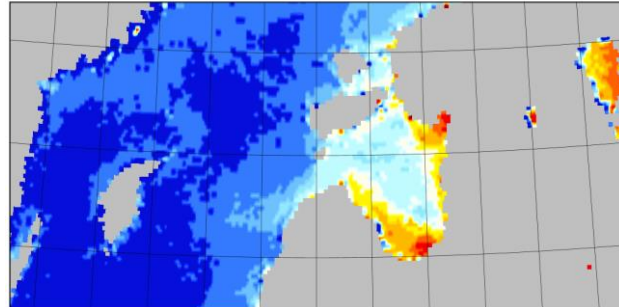
May 2009



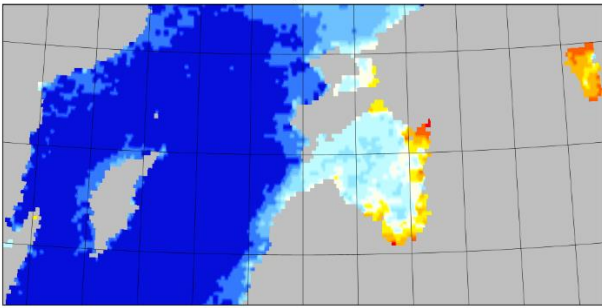
May 2010



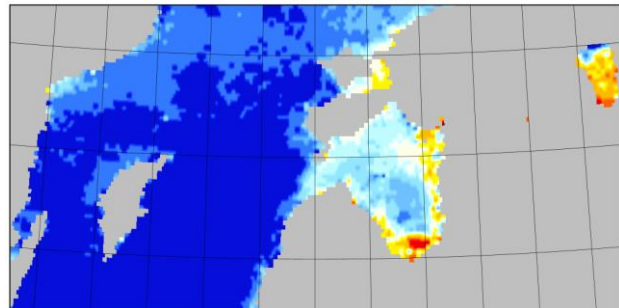
May 2011



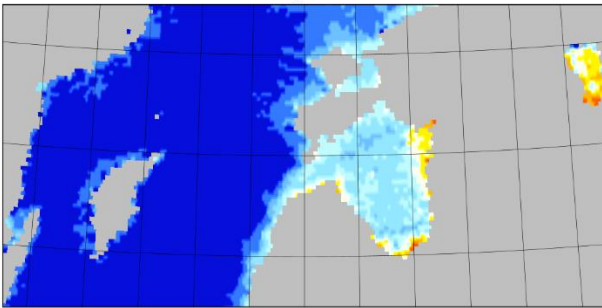
May 2012



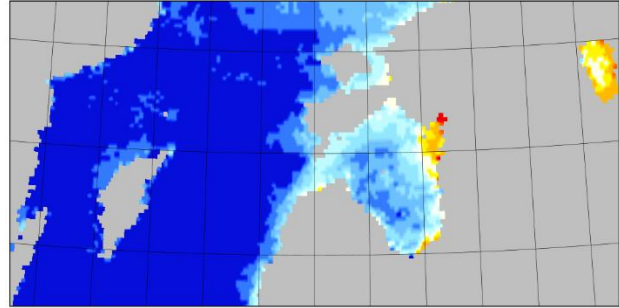
May 2013



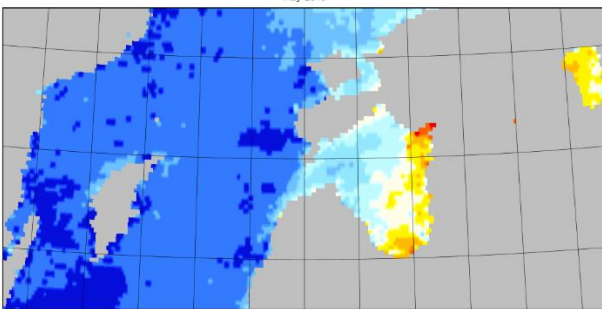
May 2014



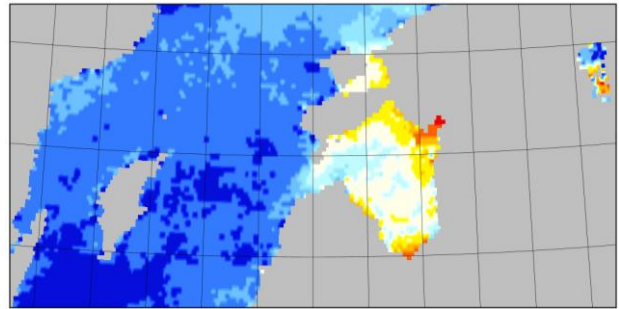
May 2015



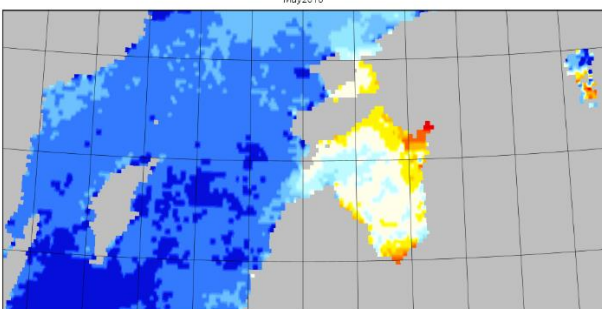
May 2016



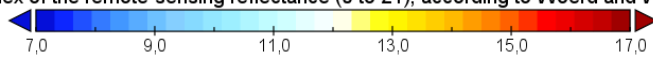
May 2017



May 2018

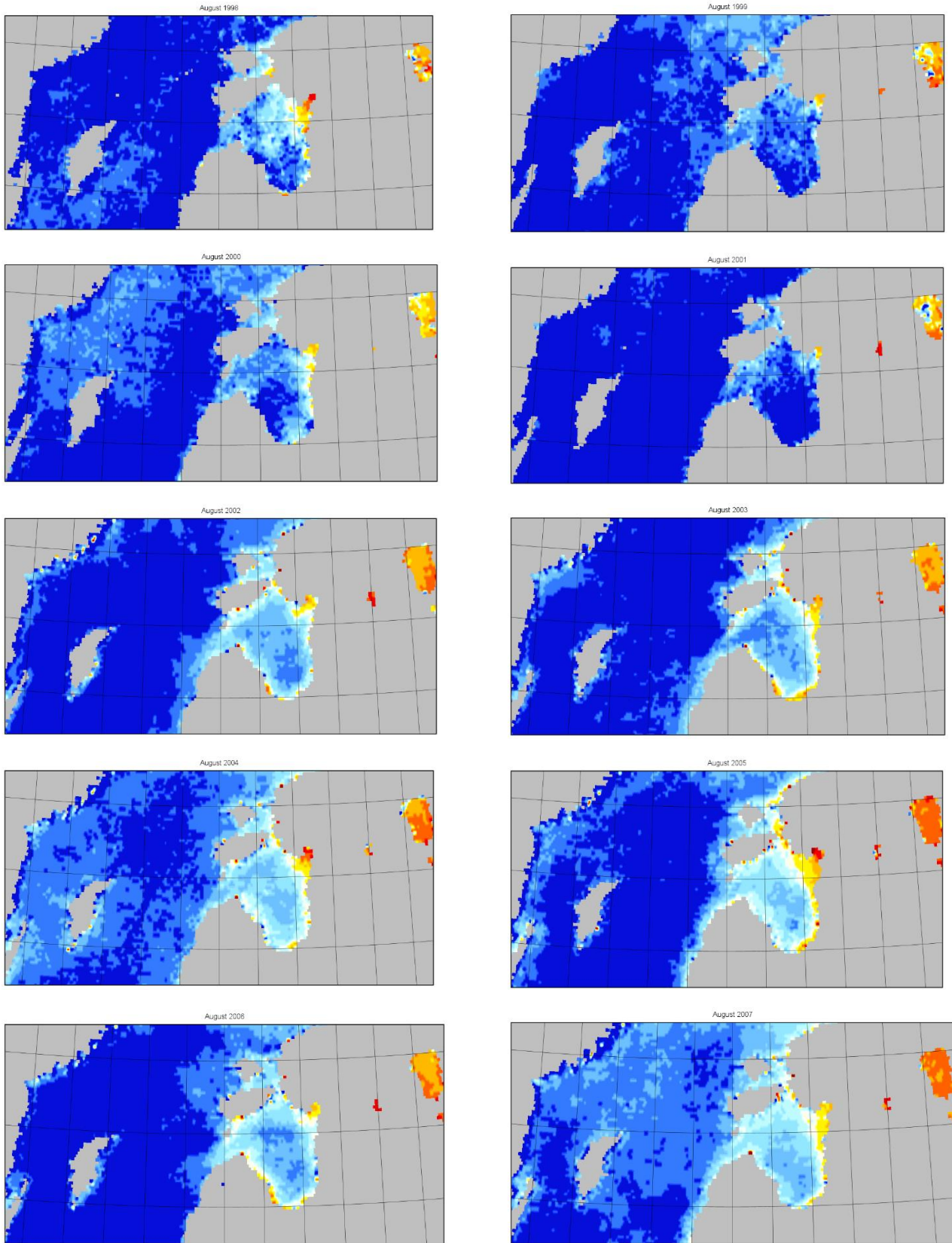


Extended Forel-Ule index of the remote-sensing reflectance (0 to 21), according to Woerd and Wernand (2015) and Pit...

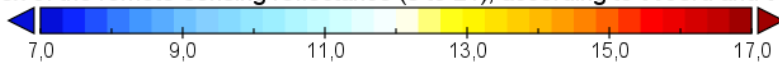




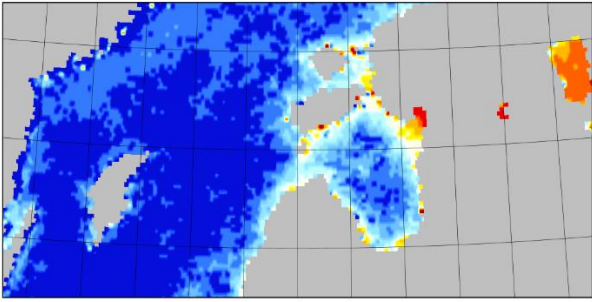
# AUGUSTS



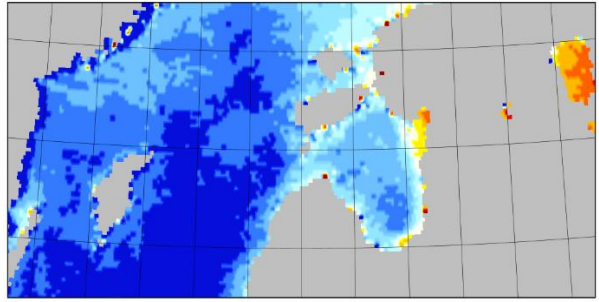
Extended Forel-Ule index of the remote-sensing reflectance (0 to 21), according to Woerd and Wernand (2015) and Pit...



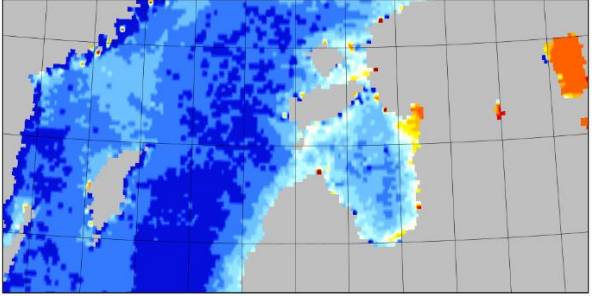
August 2008



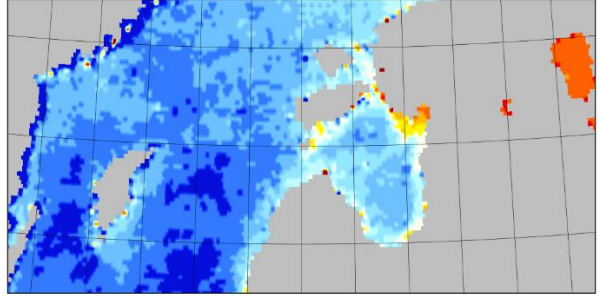
August 2009



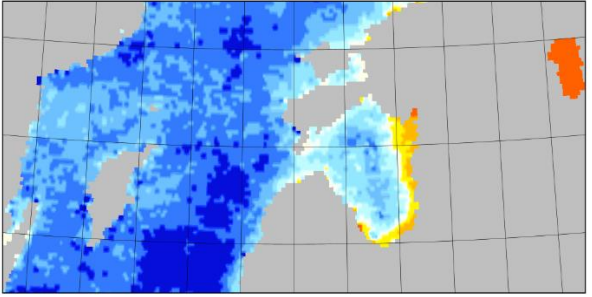
August 2010



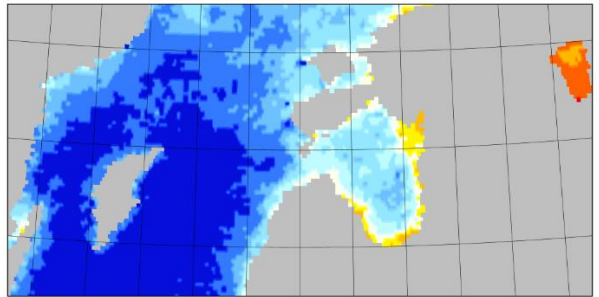
August 2011



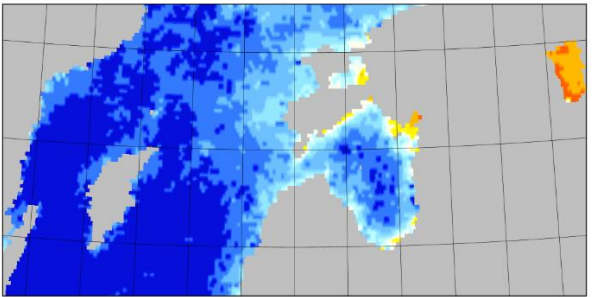
August 2012



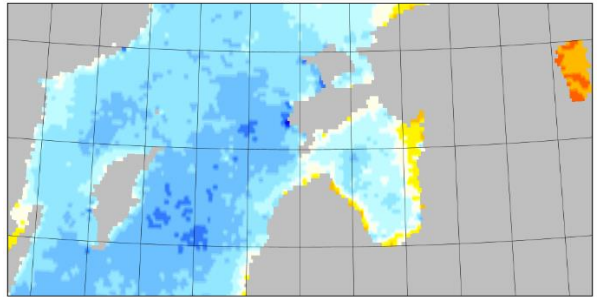
August 2013



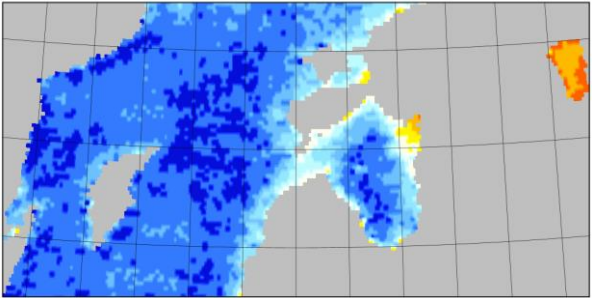
August 2014



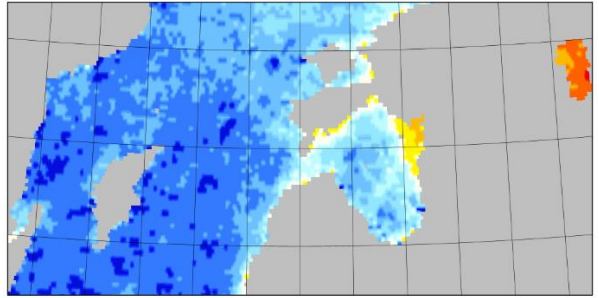
August 2015



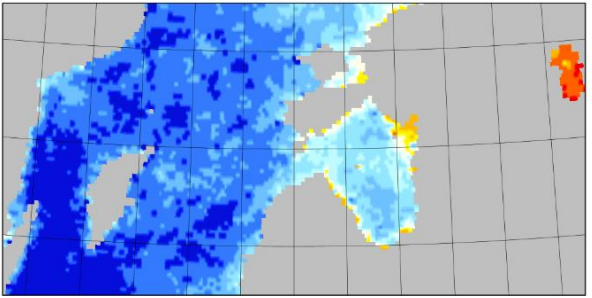
August 2016



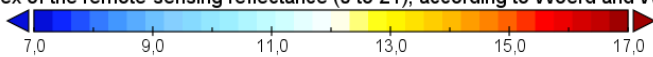
August 2017



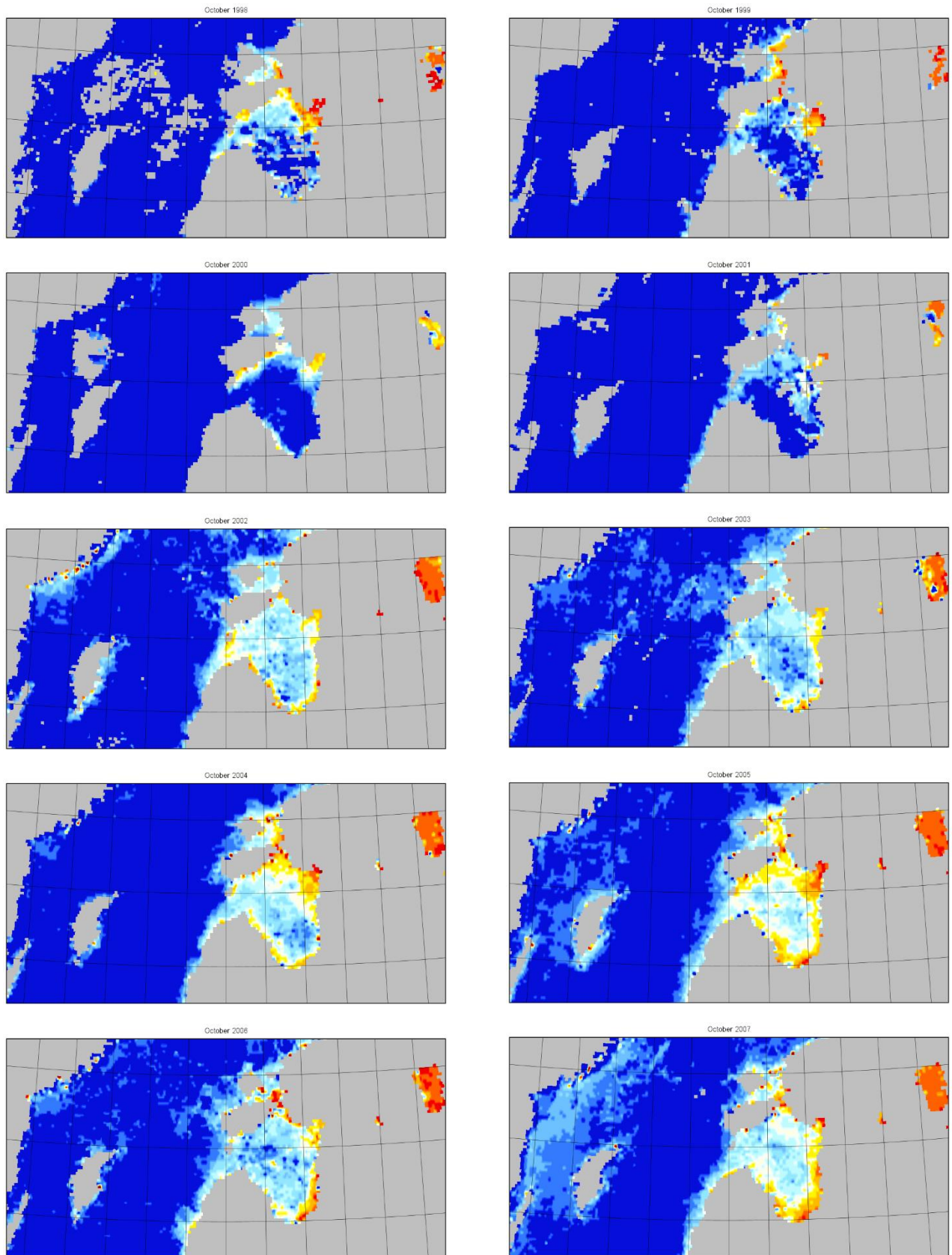
August 2018



Extended Forel-Ule index of the remote-sensing reflectance (0 to 21), according to Woerd and Wernand (2015) and Pit...



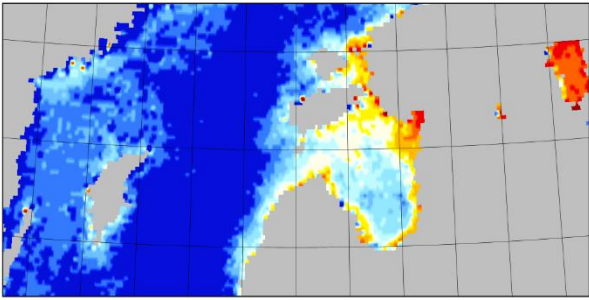




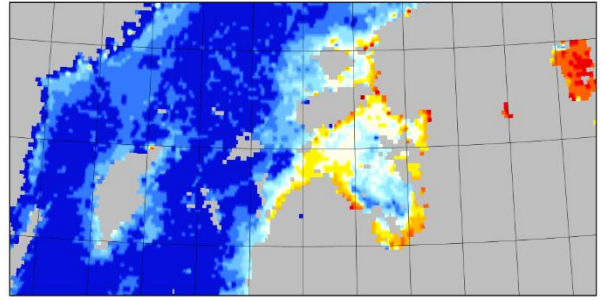
Extended Forel-Ule index of the remote-sensing reflectance (0 to 21), according to Woerd and Wernand (2015) and Pit...



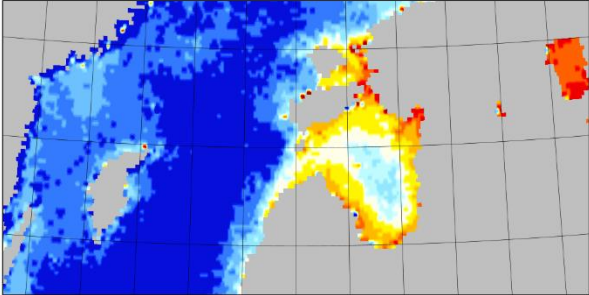
October 2008



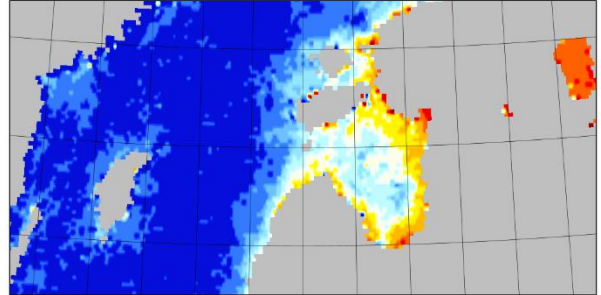
October 2009



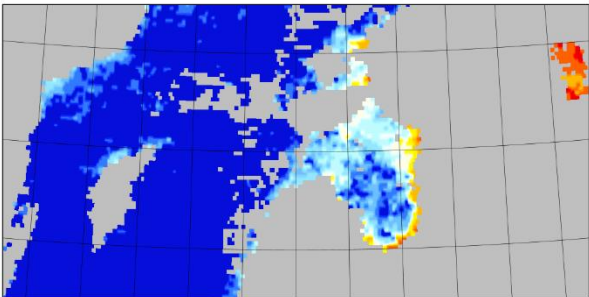
October 2010



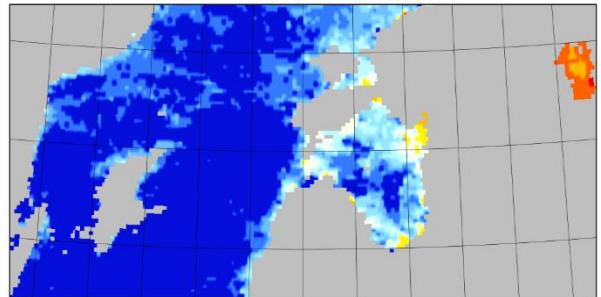
October 2011



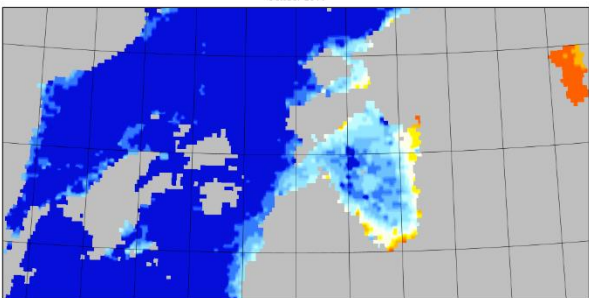
October 2012



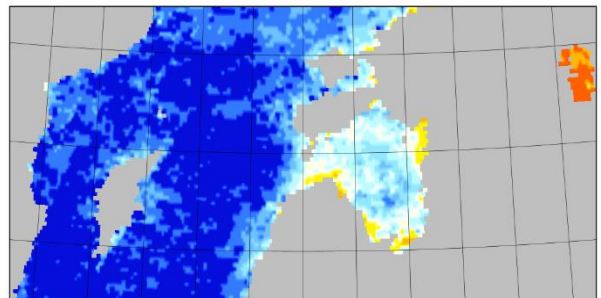
October 2013



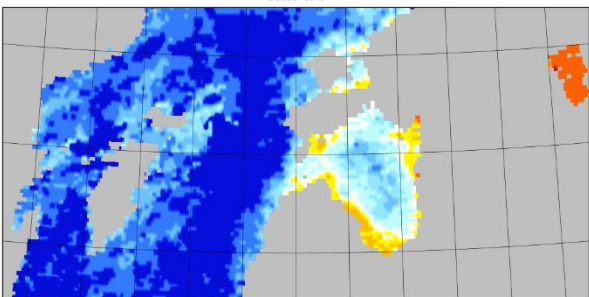
October 2014



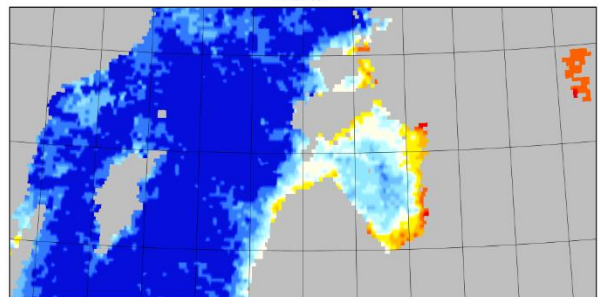
October 2015



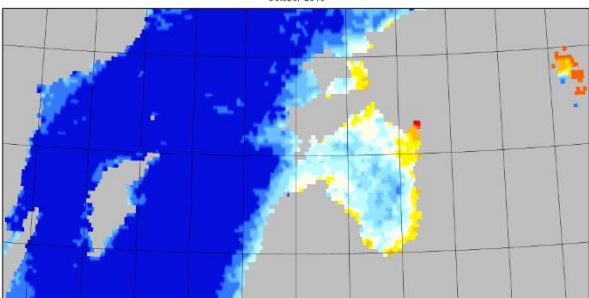
October 2016



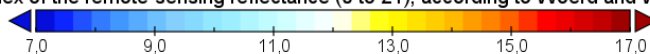
October 2017



October 2018



Extended Forel-Ule index of the remote-sensing reflectance (0 to 21), according to Woerd and Wernand (2015) and Pit...



Datu avots: *Pitarch, Jaime; van der Woerd, Hendrik J; Brewin, Robert J W; Zielinski, Oliver (2019): Twenty years of monthly global maps of Hue angle, Forel-Ule and Secchi disk depth, based on ESA-OC-CCI data.*